



# Eusoft.Lab 10: Digital innovation for your laboratory

Laboratory Information Management System | [www.eusoft.co.uk](http://www.eusoft.co.uk)

We think of the lab as a mix between functional completeness at the highest level and the most innovative technologies for web based cloud and mobile LIMS systems.

## MAIN BENEFITS:

- A complete LIMS to manage all your lab processes
- 100% cloud ready: flexible, easy to use and affordable
- Mobile access from smartphone and tablet
- Accessible also by external users
- Highly configurable and usable
- Instrument interfacing and with other software packages
- Quality assurance and complete data traceability
- Multilanguage and multilocation
- BI advanced functionalities

# EuSoft.Lab 10: one platform, many advantages

EuSoft.Lab 10 is the latest generation LIMS solution for the management of the laboratory that combines maximum functional completeness to the most innovative web-based technologies.

Designed to meet the highest standards, EuSoft.Lab has native integration features that support its use as a service (SaaS) on cloud computing platforms and integration with mobile devices such as smartphones and tablets. It is specifically designed to help laboratories to reduce costs and increase mobility and collaboration without wasting time in paper management and minimizing the risk of transcription errors. Using EuSoft.Lab you can have a single platform to manage all activities and provides real-time visibility of the performance of your analytical activities allowing you to make strategic decisions in a more informed way, giving you to significant benefits in every sector:

## ADVANTAGES FOR THE LABORATORY

- A complete platform for managing laboratory activities.
- Enhanced usability thanks to an intuitive and interactive graphical interface.
- Highly configurable LIMS with the ability for the user to customize the workflow process, the configuration of the calculations, reports and forms.
- Accessible from tablets, smartphones through the mobile APP Accessible directly for customers and external users to view the results, download the test reports and invoices, without the need for external portals.
- Short system startup period and fast ROI (return on investment) due to business logic and industry-specific templates already included in the system.
- Significant reduction of result entry time and of errors through integration with laboratory instruments.

## ADVANTAGES FOR QUALITY

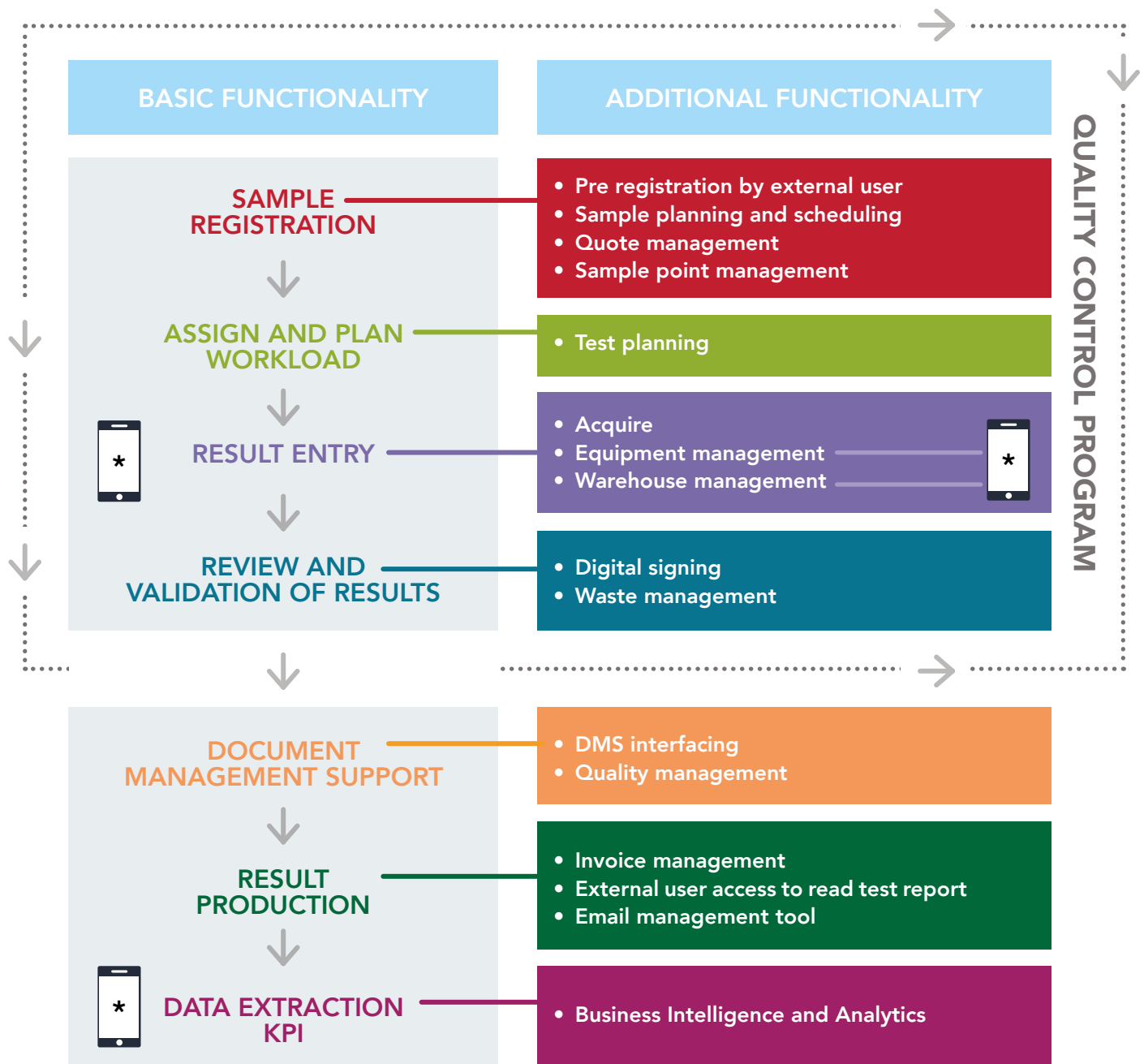
- Operates in accordance with the principles established by the UNI CEI ISO / IEC 17025 and meets the requirements defined by 21 CFR PART 11 of the FDA (Food and Drug Administration).
- Data auditing and the operation recording allow a total traceability of information.
- Authentication is configurable: accesses is role-based and protected by credentials.
- Decision support system using advanced capabilities of Business Intelligence.

## ADVANTAGES FOR INFORMATION TECHNOLOGY

- 100% web based, natively designed for use in SaaS (Software as a Service) on cloud computing platform.
- Configuration tools built into the system: eg formula management, report design and tool design of web pages.
- Multisite and Multilanguage, with different database platforms (SQL Server and Oracle).
- Can be integrated with other systems (eg accounting) and ERP - Enterprise Resource Planning (eg SAP).
- Customization without coding.
- No client installation.
- Authentication is configurable: accesses is role-based and protected by credentials, also with company domain.
- Scalability and flexibility at the highest level thanks to the use of LIMS in SaaS (Software as a Service) on cloud platforms.



# All you need for laboratory management



## BASIC FUNCTIONALITY

EuSoft.Lab is a LIMS system that can handle the steps of Acquisition – Processing – Archiving for all data generated by the laboratories. It can automate all key processes (samples acceptance, results entry, validation, generate test reports). The flexibility of EuSoft.Lab allows the laboratory to computerize the management of its activities according to custom specific workflows for each process.

Basic functionality includes data analysis through KPIs and trend or control graphs.

## ADDITIONAL FUNCTIONALITY

The suite of modules in EuSoft.Lab allows each laboratory to use only the features relevant to their activities they run. So the laboratory can automate all the specific organizational workflows through the use of best practices, improving the performance of the laboratory. EuSoft.Lab includes the following modules:

### SAMPLE PLANNING

allows you to configure the plans of analytical activities, associate each activity planned with analytical profiles and set the frequency of the activity plans.

### TEST PLANNING

allows you to monitor the workload for each user and/or each instrument. The aim is to give the Lab manager all the information required to improve laboratory performance.

### WAREHOUSE MANAGEMENT

automates warehouse management of multiple products. EuSoft.Lab allows you to specify the products (i.e. reagents, glassware, standard preparations, etc.) to be used for each test, to put an order directly to the supplier and to manage the stock.

### DMS INTERFACING

allows to interface EuSoft.Lab with DMS system, in order to organize the document and facilitate the collaboration, too.

### EXTERNAL ACCESS

allows external access to the LIMS to view result and samples status or to download test reports and invoices. Additional features allow trained users to enter sample details and to request tests and analysis.

### QUOTE MANAGEMENT

quotes Management module issues quotations for analytical and non-analytical activities. The LIMS manages the workflow of all the steps of the quote from sample acceptance and keeps track of contractual terms with customers until billing. It can also be integrated with external accounting software.

### ACQUIRE

it allows you to obtain data directly from the equipment importing data from the result sheet.

### DIGITAL SIGNATURE

this tool allows the Laboratory to Generate a test report in .pdf and p7m format and to sign it digitally.

### QUALITY MANAGEMENT

is designed to facilitate laboratory quality management by the entry and management of noncompliance, corrective and preventive actions.

### EMAIL MANAGEMENT TOOL

allows the user to forward the results of analysis by e-mail, fax or SMS. Providing immediate sharing of results with customers.

### SAMPLE POINT MANAGEMENT

enables the complete control of the characteristics of the sampling points (location, height, inner / outer diameter, etc.). Ensuring that samples are collected from the correct location using the approved methodology.

### EQUIPMENT MANAGEMENT

through the Equipment Management module it is possible to manage activities (preventive and / or corrective) on the laboratory equipment and its accessories and report any anomalies.

### WASTE MANAGEMENT

allows you to configure the hazard statements, the tests suite for the characterization and classification of the waste also including automatic association of tests with the specific hazard.

### INVOICING

issuing invoices related to testing activities with the option of transferring data to external accounting software.

### BUSINESS INTELLIGENCE

this allows to apply advanced search algorithms and predictive analytics to extract information. The aim is to improve the efficiency and reduce decision-making time.

### QCP

allows you to manage the control samples, control cards, and control limits, to execute proficiency tests.



## LIMS MOBILE APP

EuSoft.Lab is available from tablets and smartphones by APP. The data can be inserted as it is generated. The laboratory can perform operations, such as result entry, handle the products in stock, display response plans on the equipment, extract and display indicators of performance of the laboratory directly from mobile tools to save time in all laboratory's processes.

# EuSoft.Lab 10: the success as the scope of any laboratory

The high configurability and scalability of the system combined with the experience we have with in many laboratories of different sizes, make EuSoft.Lab suitable for laboratories of a few users to companies with hundreds of users. EuSoft.Lab has a variety of deployment options. Depending on the size and needs of the company, different proposals are available and you can choose to purchase the license to use (on-premise) or SaaS (Software as a Service), on platforms in cloud computing.

Whether you want to use our application as Software SaaS or to install it "in-house" (on-premise), we can provide the optimal solution for the business requirements. As the needs of the lab change, you can add new users, scale to a more complete version, or decide to switch from On-Premise to SaaS or vice versa, because EuSoft.Lab is a single product.

EuSoft.lab is the first LIMS to be re-designed for use as SaaS (Software as a Service) on cloud computing platforms.

With the LIMS as SaaS the laboratory can access directly by the web paying a monthly fee without worrying about maintenance, upgrades or back-up.

## CHOOSE THE BEST SOLUTION FOR YOUR NEEDS

CLOUD	ON PREMISE
<p>The LIMS solution Cloud as SaaS is ideal for:</p> <ul style="list-style-type: none"><li>• startups or small laboratories who need to start using LIMS without lengthy and costly implementation and customization projects.</li><li>• For larger companies that want to reduce costs of information management systems, the time to market and want to innovate their IT strategies.</li></ul>	<p>The LIMS solution on-premise is to be for organizations:</p> <ul style="list-style-type: none"><li>• with policies for corporate computing infrastructure about the internal management of business applications.</li></ul>
CLOUD	ON PREMISE
No initial cost of license	Licence's cost
No hardware to install and manage	Costs of purchasing and maintaining hardware
Support already included in the service	Separate purchase of maintenance fees
System security is in the hands of the service supplier with the highest standards	Security of the system charged to is the responsibility of the customer
No need for IT staff dedicated to maintenance and support.	Need IT staff dedicated to maintenance and support
Updates applied to all clients simultaneously by the seller at no cost	Need IT staff dedicated to maintenance and support
Backup carried out by the service provider	Backup carried out by customer



**SMALL  
COMPANY**



**MEDIUM  
COMPANY**



**LARGE  
COMPANY**



# Vertical solutions and maximum configurability for different business areas

Thanks to their years of experience Eusoft has the business logic and specific industry templates (e.g. food & beverage, environmental, utilities, contractors, chemical, pharma). This means your laboratory can have a specific configuration for the right target market, limiting the amount of customization of the system and hence the cost of the project. This reduces the time involved in starting the LIMS project, improves the ROI (return on investment), and simplifies maintenance tasks.

## MAIN INDUSTRIES



CONTRACT  
LABS



ENVIRONMENTAL  
AND EPA



FOOD  
& BEVERAGE



OIL & GAS



CHEMICAL



PHARMA

## ABOUT US

Headquartered in Bari, Eusoft also has offices in Milan and London, where it opened Eusoft Ltd in 2015.

Our goal is to provide the best web based LIMS that exploits the benefits of digital innovation, both cloud and mobile, which helps laboratories to manage their processes better and to improve organizational efficiency.

We are a team of professionals LIMS experts, since 1997 we have provided innovative software for laboratory management to businesses of all types.

That's why we decided to invest in creating a powerful and scalable platform cloud - SaaS LIMS.

### Ask for a live demo

Email: [marketing@eusoft.co.uk](mailto:marketing@eusoft.co.uk)  
[www.eusoft.co.uk](http://www.eusoft.co.uk)

**eusoft**  
more than a lms

FOLLOW US [www.eusoft.co.uk](http://www.eusoft.co.uk)

